

INTRO ABOUT PANAMA

Jorge Pino

Florida Museum of Natural History
University of Florida
SENACYT

- Molecular systematics of Neotropical vertebrates
- Building of local capacity



- **Panamá**

- **Central America**

- **Population:**

- 3,661,868 persons (last census)
 - Primarily a mixture of native Amerindians, Spaniards, French, Chinese, many others...

-

- **Official language:**

- **SPANISH**
 - **English** (mandatory in elementary and high school centers)
 - **French** (mandatory in official high school centers until ~2008)

Panama as a Country

- **1821** (Independence from Spain)
- 1831
- 1899–1902
- **1903** (Separation from Colombia; *the third one is the one!*)
 - Hay/Bunau-Varilla Treaty with the United States [*10 miles (16 km) wide and 50 miles (80 km) long "in perpetuity"*]
 - 1977 – Torrijos-Carter [return these lands to Panama in 2000]



France
Africans

The Canal

USA
Chinese



Manuel Noriega



Omar Torrijos



Military intervention in 1989



The "pollera" national costume



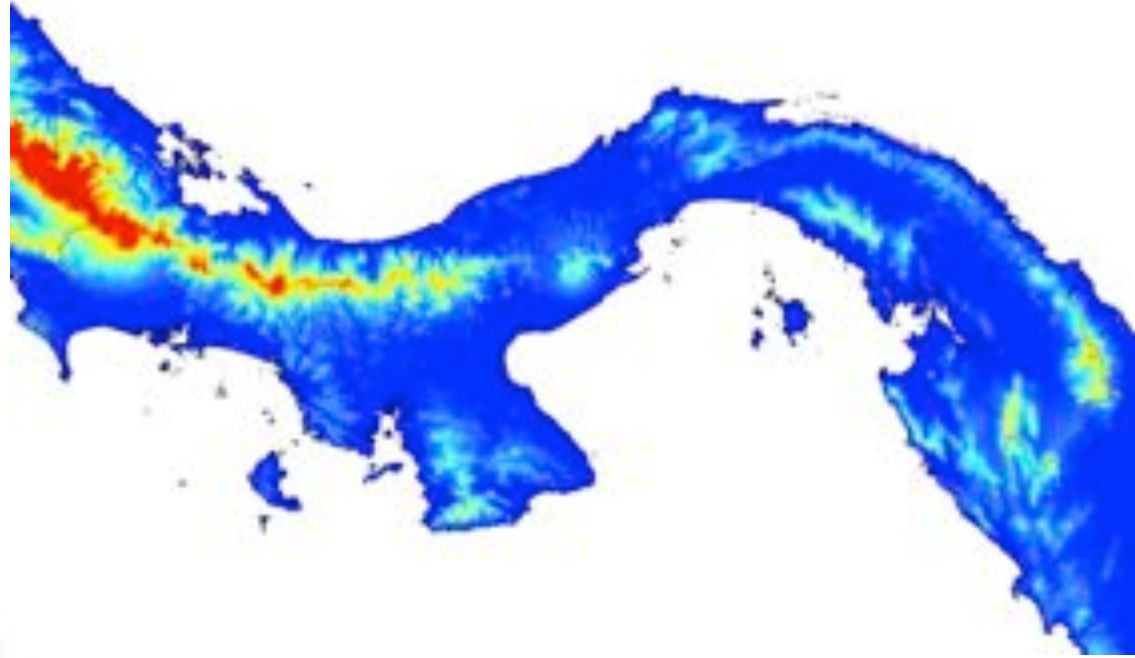
Gunás indigenous group



“Diablos rojos” Red devils



- **Current Diversity**
- **Diversity arrangements**
- **Climate change**
- **How can past history inform about modern diversity assemblages?**
- **How can we transfer these findings to non STEM population?**

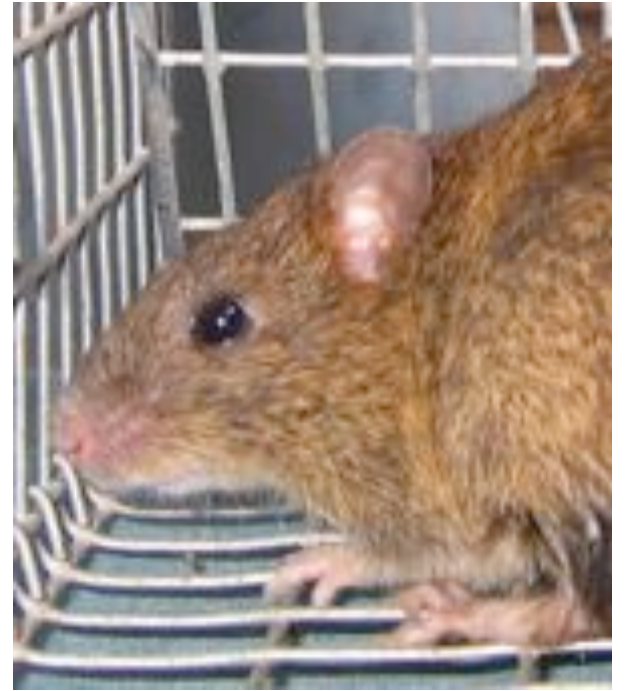


Several landscapes and climates that promoted the establishment of many taxa (plants, animals, bacteria, etc.)













Involving and building local capacity



THANKS.!