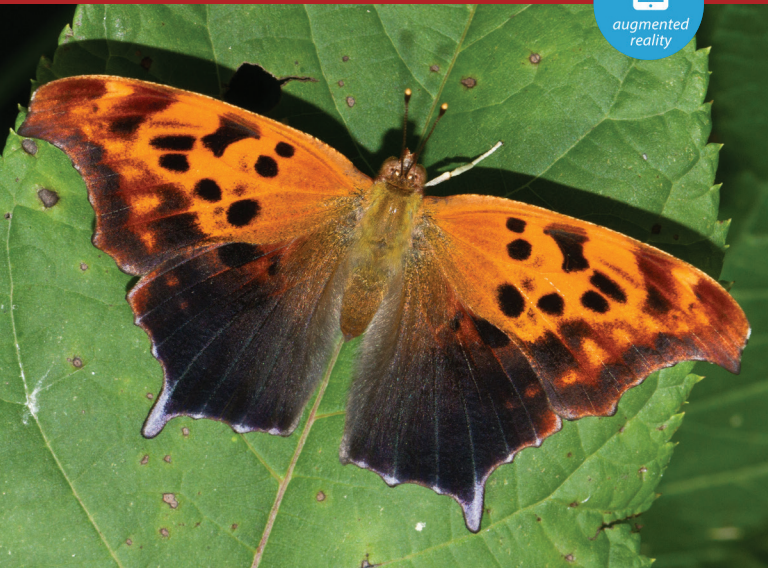


Question Mark

(*Polygonia interrogationis*)

Bring this image to life:
see reverse side for details



Florida Museum
3D Butterfly Cards



The **Question Mark** (*Polygonia interrogationis*) is a distinctive orange and black butterfly of wooded habitats across much of Florida. Its odd name comes from the small silvery spots on the underside of the hindwing that, with some imagination, resemble the punctuation mark. The wings above are seasonally variable. Summer individuals have all black hindwings while those seen in winter are primarily orange. The wings below are mottled brown and resemble dead leaves, which aids in camouflage when the butterfly is at rest. The adults seldom visit flowers but instead feed on tree sap, animal dung, carrion or the juices from fermenting fruit. They have a rapid, erratic flight but frequently alight on overhanging branches, tree trunks or the ground.

The Question Mark utilizes trees in the Elm family as larval hosts, including Sugarberry (*Celtis laevigata*) and American Elm (*Ulmus americana*). Females lay small dark green eggs singly or in short stacks on top of one another on host leaves. The resulting larvae are black and orange with cream stripes and prominent branched spines. Several generations are produced each year in Florida. Adult butterflies overwinter in protected sites.

- *Download the Libraries of Life app from the iTunes or Android store and install on your device.*
- *Launch the app and select the Florida Museum icon.*
- *Hold your mobile device camera about 6 inches away from card image.*
- *View specimen and click buttons to view content.*



Cover photo by: Kathy Malone

The Florida Museum of Natural History is a leading authority in biodiversity and cultural heritage, using its expertise to advance knowledge and solve real world problems. The Florida Museum inspires people to value the biological richness and cultural heritage of our diverse world and make a positive difference in its future.