

Lindsay Bloch, Ann S. Cordell, and Amanda Wagner-Pelkey
Ceramic Technology Laboratory, Florida Museum of Natural History

CHALLENGES

Hands-on and visual learning is a critical part of archaeological training. However, many researchers and professionals lack material such as type collections and other resources necessary to develop skills.

Archaeologists must also be able to reach the public, with materials that are accurate, simple, and engaging.

APPROACH

The Ceramic Technology Laboratory (CTL) is a repository and a research and training facility. We develop digital and accessible physical tools to address both these challenges, reaching the wider audience who cannot come to the lab.



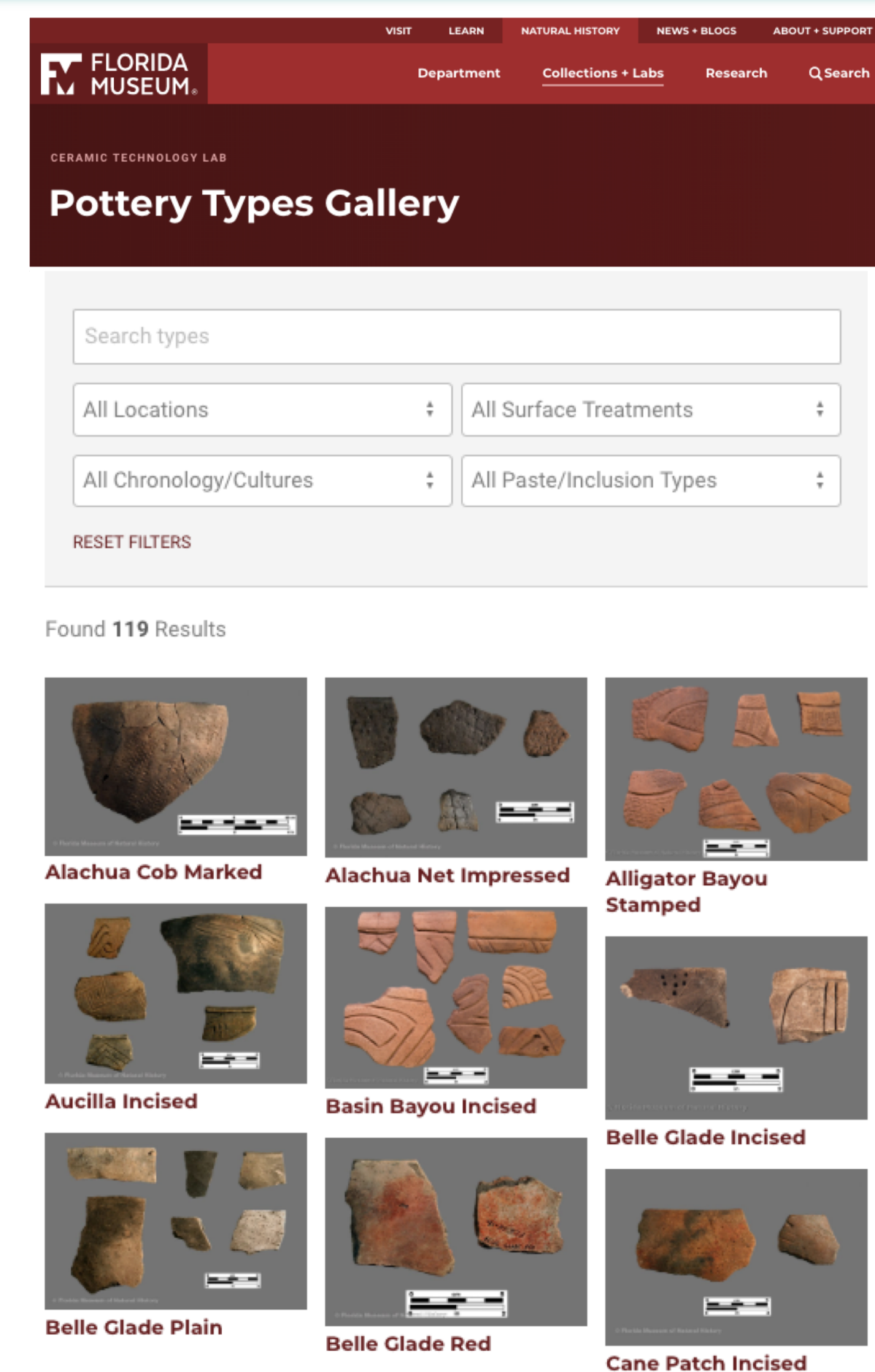
DIGITAL

Digital Type Collection and Galleries

Our digital type collection is structured to be accessible to scholars and the general public. A visitor can browse images of all types, or search by specific attributes.

Each type has a overview of characteristics, full color image(s) and references the original type description.

In addition to the searchable Florida pottery collection, we have four comparative regional galleries: Georgia, Alabama, Lower Mississippi Valley, and Caddoan, as well as common tempers and inclusions.

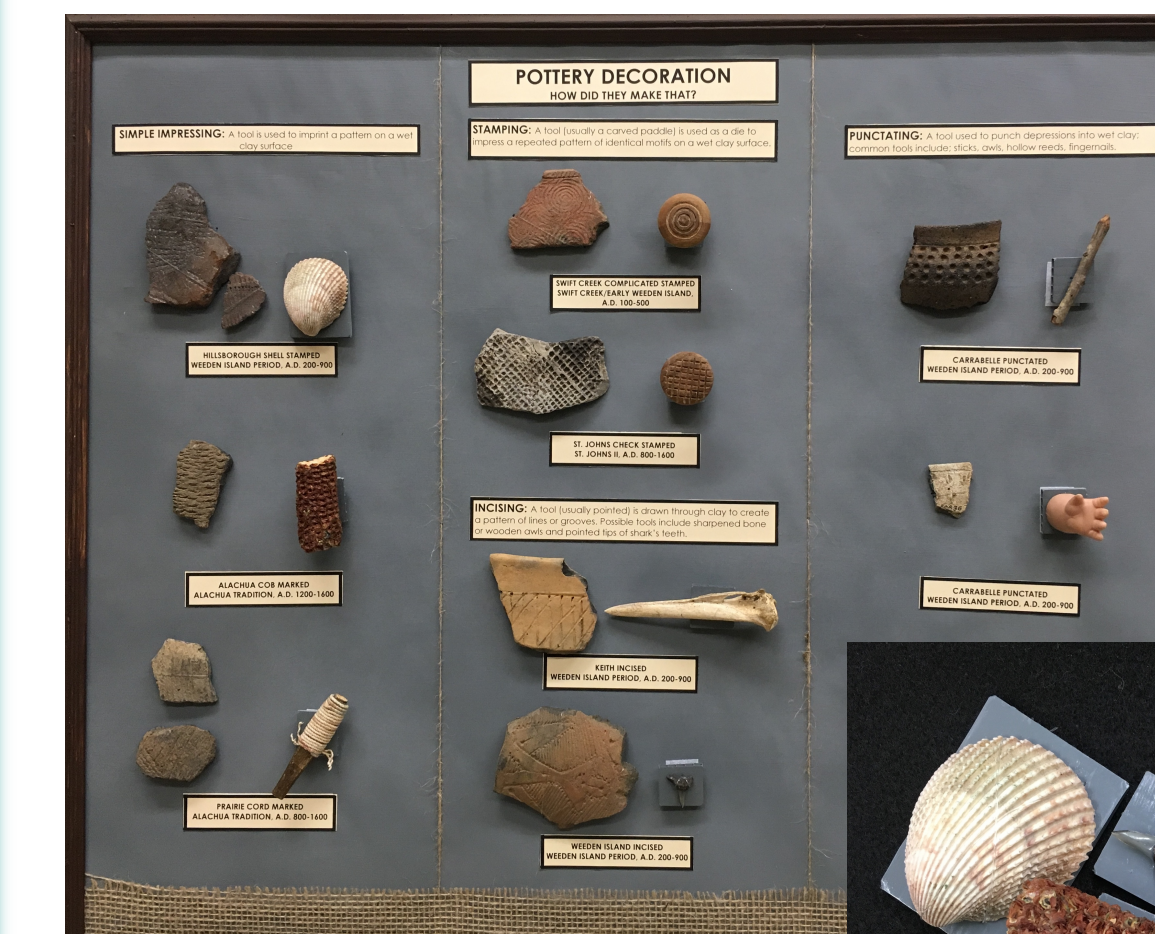


www.floridamuseum.ufl.edu/ceramiclab/pottery-types-gallery/

HANDS ON

Activities and Displays

We design our outreach materials to reach multiple audiences.



Our Pottery Decoration board is useful for training students and volunteers but also doubles as a matching game for children, no reading required.



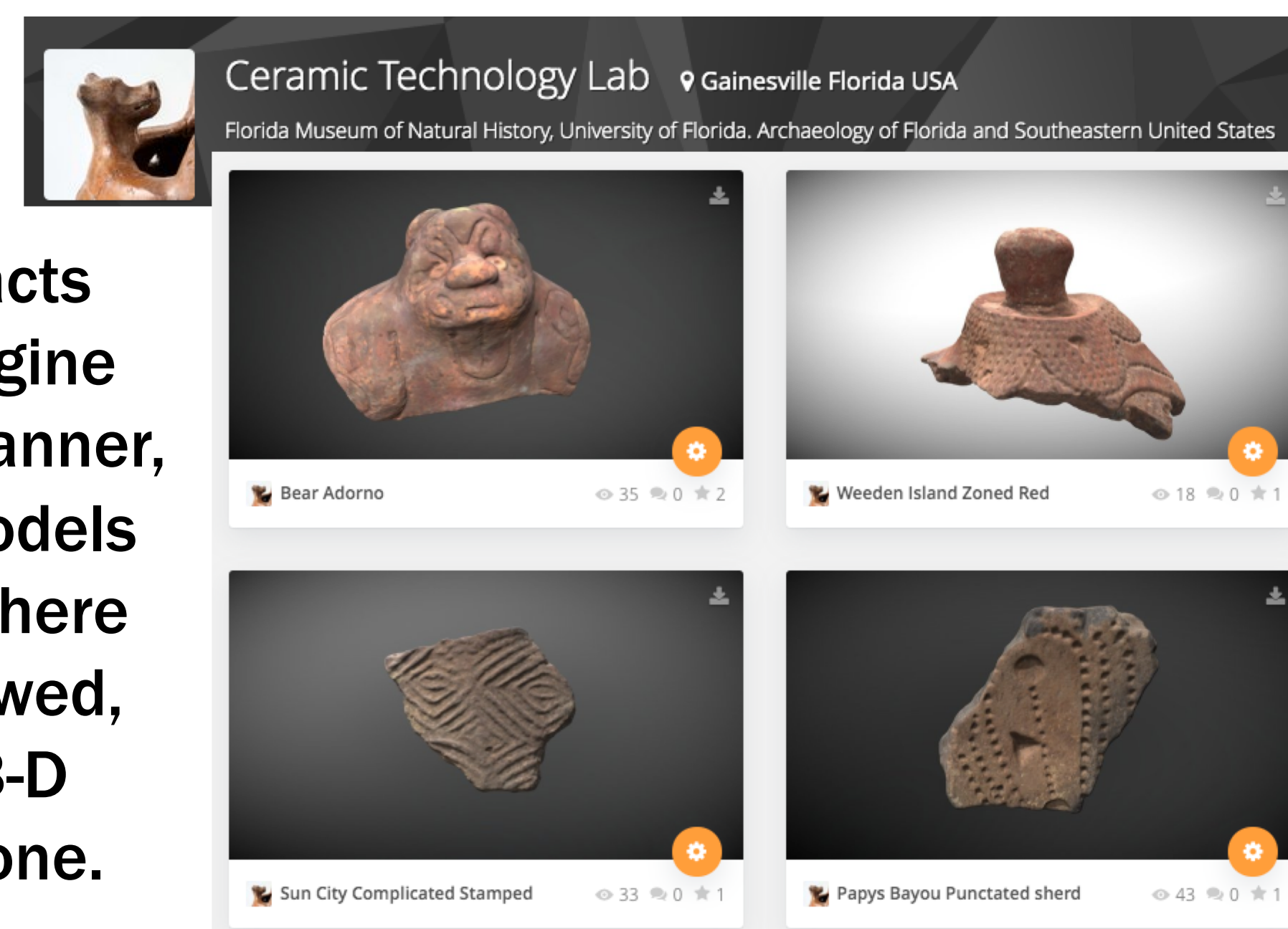
3-D prints of artifacts are taken to schools and outreach events.



Durable resin blocks comparing different inclusion and temper types can be used with or without a microscope for education at all levels.

3D Models and Prints

We scan artifacts using a NextEngine desktop laser scanner, and post the models to Sketchfab, where they can be viewed, shared, and 3-D printed by anyone.



<https://sketchfab.com/CeramicTechLab>

Guides

We provide manuals for some of our specialized activities, such as pottery reconstruction.

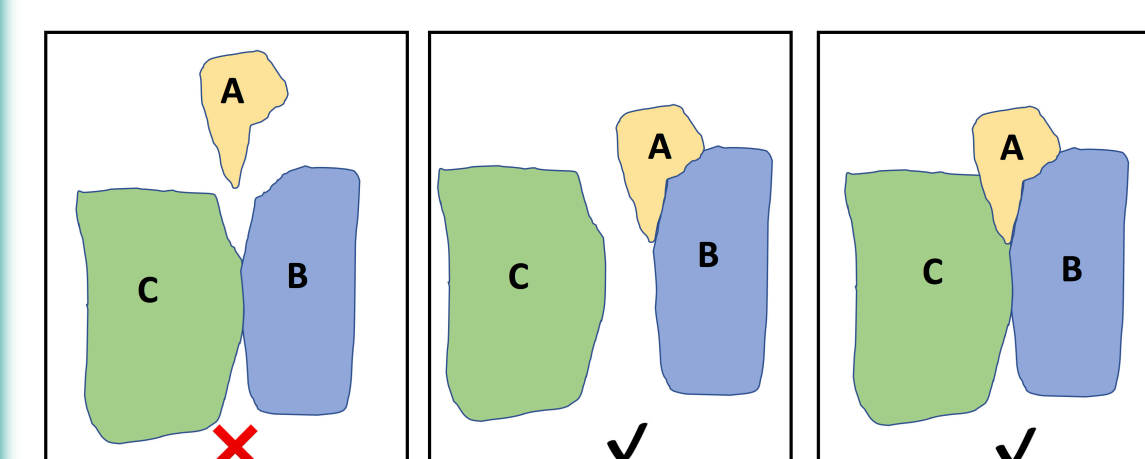


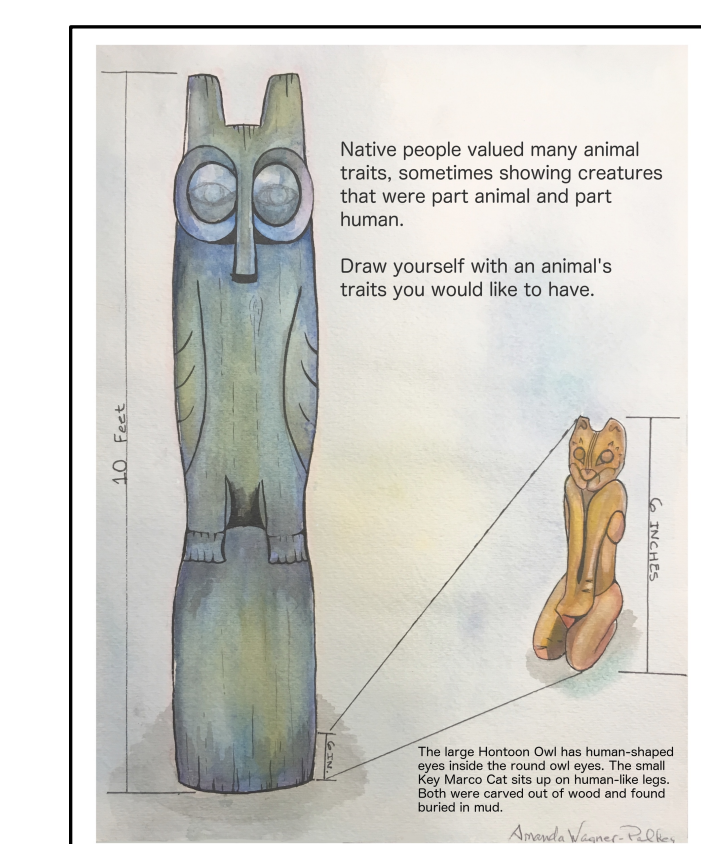
Figure from "A Guide to Pottery Reconstruction" by Cordell and Bloch. Correct order of sherd mending to avoid acute fit angles. Mending sherd B to sherd C first would make it difficult or impossible to fit sherd A. Instead, mend A to B, and then add C.



www.floridamuseum.ufl.edu/ceramiclab/publications/

NEXT STEPS

- Solicit feedback and assess usage of resources.
- Launch lending library of physical resources, including a mini type collection and 3-D printed activity kits.
- Expand interpretive materials, such as activity book.



Sample page from forthcoming Art of Florida Native Peoples activity book.