

Florida Museum Web Resources: Paleontology



Vertebrate Paleontology

www.floridamuseum.ufl.edu/florida-vertebrate-fossils/

The Vertebrate Paleontology Division houses the nation's third-largest collection of cataloged vertebrate fossils, with a total of about 900,000 specimens mainly from the last 65 million years. Approximately 75% of the specimens are from about 1,200 localities in Florida. The species accounts are linked with the Vertebrate Fossil Sites of Florida, which provides information on the localities of the fossils.



Invertebrate Paleontology

www.floridamuseum.ufl.edu/invertpaleo/

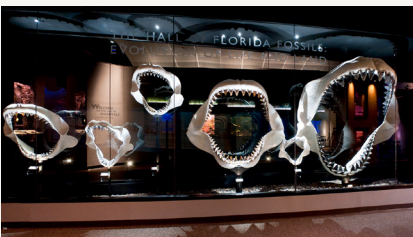
The Florida Museum's Invertebrate Paleontology Division houses nearly 6.5 million specimens, mostly collected from over 7,500 sites in Florida, the southeastern U.S., the Caribbean, Central and South America and Antarctica. It is largely composed of fossil invertebrates from the last 65 million years.



Paleobotany and Palynology

www.floridamuseum.ufl.edu/paleobotany/

The Florida Museum's Paleobotanical Division includes approximately 250,000 specimens, ranging from the Proterozoic to the Pleistocene, and includes collections from more than 50 countries. The online collection database contains more than 70,000 digitized records of the collection.



Fossil Sharks

www.floridamuseum.ufl.edu/discover-fish/sharks/fossil/

Sharks are sometimes referred to as "living fossils." Ancient sharks lived in the oceans long before animals colonized the land and most fossil evidence of early sharks exists as fossil teeth along with a few skin impressions.



Fossil Horses

www.floridamuseum.ufl.edu/fossil-horses/

The fossil record shows horses originated in North America at least 55 million years ago and roamed the continent before becoming extinct at the end of the last ice age, about 10,000 years ago. Because horses have been around a long time, learning about their evolution provides unusual insight into the patterns of evolution in general.



Montbrook Fossil Dig Site

www.floridamuseum.ufl.edu/montbrook/

This fossil site is believed to be 5 to 5.5 million years old (latest Miocene – earliest Pliocene) and an ancient freshwater river system relatively close to a coast, teeming with fish, amphibians, snakes, turtles, alligators and water birds.

View images and hear stories about select objects
from the Florida Museum's paleontological collections.



Agatized Fossil Coral

www.floridamuseum.ufl.edu/100years/agatized-fossil-coral/



Ancient Alligator

www.floridamuseum.ufl.edu/100years/ancient-alligator/

Ancient Great White Shark

www.floridamuseum.ufl.edu/100years/ancient-great-white-shark/

Blue Hole Reptiles

www.floridamuseum.ufl.edu/100years/blue-hole-reptiles/

Blunt-Snouted Dyrosaurid

www.floridamuseum.ufl.edu/100years/blunt-snouted-dyrosaurid/



Caribbean Monk Seal

www.floridamuseum.ufl.edu/100years/caribbean-monk-seal/

Cofrin's Side-necked turtle

www.floridamuseum.ufl.edu/100years/cofrins-side-necked-turtle/

Columbian Mammoth

www.floridamuseum.ufl.edu/100years/columbian-mammoth/

www.floridamuseum.ufl.edu/100years/columbian-mammoth-exhibit/



Dwarf Tortoise

www.floridamuseum.ufl.edu/100years/dwarf-tortoise/

Fossil Palm

www.floridamuseum.ufl.edu/100years/fossil-palm/

Fossil Seagrasses

www.floridamuseum.ufl.edu/100years/fossil-seagrass/



Giant Armadillos and Giant Sloths

www.floridamuseum.ufl.edu/100years/south-american-ancestors/

Gracile Saber-Toothed Cat

www.floridamuseum.ufl.edu/100years/gracile-saber-toothed-cat/



Horse Evolution

www.floridamuseum.ufl.edu/100years/ancient-horses/

www.floridamuseum.ufl.edu/100years/three-toed-transitional-horse/

www.floridamuseum.ufl.edu/100years/north-american-ancestors/

Megalodon

www.floridamuseum.ufl.edu/100years/miocene-megatoothed-shark/

www.floridamuseum.ufl.edu/100years/megalodon-shark/

Rhinoceroses

www.floridamuseum.ufl.edu/100years/rhinoceroses/



Titanoboa

www.floridamuseum.ufl.edu/100years/titanoboa/

Terror Bird

www.floridamuseum.ufl.edu/100years/terror-bird/



White's Bear-Dog

www.floridamuseum.ufl.edu/100years/whites-bear-dog/