



**Corporate Membership
at the Florida Museum:**
Together We'll Do Great Things

Local businesses play a vital role in helping the Florida Museum inspire people to care about life on Earth.

Corporate Members provide funding for ground-breaking research and conservation initiatives, support outreach efforts and contribute to innovative exhibitions. Join today to be part of something great!

A few great things about us:

- With more than 40 million specimens in the collections, the Florida Museum is one of the largest research-based museums in the world.
- Florida Museum scientists conduct research on every continent.
- The Florida Museum has more than 200,000 visitors annually, including 14,000 school children and 15,000 University of Florida students.
- Nearly 1,000 K-6 grade students attend the Museum's camps and classes.
- More than 500 volunteers serve the equivalent of nearly 18 full-time employees.
- 120 middle and high school students participate in the Junior Volunteer program and work alongside Museum staff in the collections, exhibitions and programs.

CORPORATE MEMBERSHIP

Three levels of corporate giving offer something for every business, with great benefits for the company and its employees. Examples include:

- Recognition as a Corporate Member
- A Museum program of your choice designed for your employees
- Information table at Signature Museum Events
- Discounted Museum rentals for private events
- Exclusive exhibition and event sponsorship opportunities





Demonstrate your commitment to inspiring people to care about life on Earth with a Corporate Membership.

Call 352-273-2047 or email membership@flmnh.ufl.edu to sign up.

CORPORATE MEMBERSHIP BENEFITS

Benefits	Small Business Alliance (75 employees or fewer)			Corporate Associates (250 employees or fewer)			Corporate Partners
	\$500	\$1,250	\$2,000	\$2,500	\$5,000	\$7,500	\$10,000+

For Employees							
Discounted Museum Memberships	10%	20%	20%	10%	20%	20%	20%
A Museum program designed for your employees			✓			✓	✓

For the Company							
Recognition in the Museum's lobby	✓	✓	✓	✓	✓	✓	✓
Recognition on the Museum's website	✓	✓	✓	✓	✓	✓	✓
Recognition at member events and in member emails, mailings and invites.		✓	✓		✓	✓	✓
Information table at Signature Museum Events			✓			✓	✓
Discounted Museum rental*	10%	10%	15%	10%	10%	15%	
Complimentary Museum rental*							✓
Discounted exhibit and event sponsorship opportunities	✓	✓	✓	✓	✓	✓	✓

For Executives							
Two Museum Associates Memberships	Dual	Household	Household	Dual	Household	Household	Household
Invitations to Director's events and special receptions		2	4		2	4	4
VIP Museum Tour for up to 10 guests			✓			✓	✓

*Limited to one per year; subject to availability

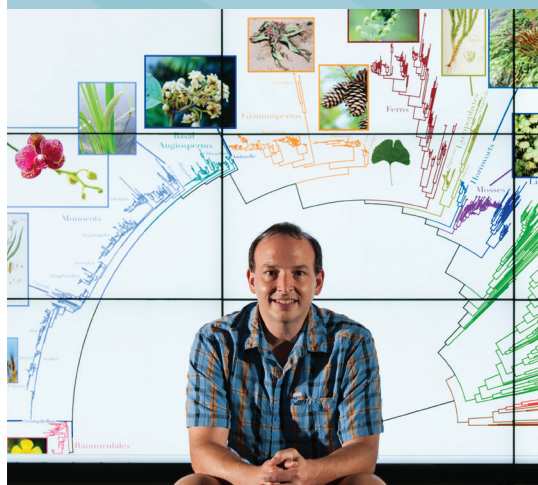
Imagine your impact:



INNOVATE



EDUCATE



INSPIRE

Interested in other corporate giving opportunities?

Put your name on an upcoming exhibition or event as a **corporate sponsor** or make a direct impact on the community through **education sponsorships**.

Contact the annual giving and development coordinator, 352-273-2047, membership@flmnh.ufl.edu and **make a difference today!**



3215 Hull Road • PO Box 112710 • Gainesville, FL 32611-2710
www.flmnh.ufl.edu/join