

GREENHOUSE GAS EMISSIONS (BY SOURCE)
Transportation overall is 27% of U.S. emissions



HOW TO: GO GREEN DURING SCHOOL

REMEMBER TO: RECYCLE



SUSTAINABLE ORGANIZATIONS

GATORS FOR A SUSTAINABLE CAMPUS
www.sustainablegators.org

Aims to increase awareness of sustainability on campus and encourages students to lead more sustainable lives. GSC is affiliated with the UF Office of Sustainability and leads the Renewable Energy Fee initiative.

BIOENERGY AND SUSTAINABLE TECHNOLOGY SOCIETY
grove.ufl.edu/~bests

Provides a forum within which to discuss and educate the members and the public at-large about the technological realities, politics and economics of bioenergy and renewable resources, energy conversion and distribution, and sustainable technologies.

UF GREEKS GOING GREEN
ufgreeksgoinggreen.wordpress.com

Promotes environmental awareness and eco-friendliness within the UF Greek community.

U.S. GREEN BUILDING COUNCIL, UF STUDENT CHAPTER

Works to raise awareness of green building principles and practices among the design, construction, planning, engineering, and real estate communities.



STUDENT REPRESENTATION

JOINT STANDING UF SUSTAINABILITY COMMITTEE
www.dso.ufl.edu/vpsa

Seeks to enhance the University's standing as a global leader in sustainability. Student Government appoints two student representatives to the committee each year.

CHOMP THE VOTE

Student Government's agency responsible for registering UF students to vote and increasing student voter turnout. Volunteers are always needed! That means you!

STUDENT GOVERNMENT AGENCY FOR SUSTAINABILITY

Works towards implementing policies and programming which brings about sustainable improvements to the University of Florida. Email Bailey Kilbourne at bailey@ufl.edu or call 561-573-3258.

STUDENT GOVERNMENT STUDENTS TAKING ACTION AGAINST RACISM
www.sg.ufl.edu/staar

STAAR has a mission to encourage a diverse atmosphere for UF students to grow and learn from.

GAINESVILLE RECYCLES all plastic with a #1 or #2 on the bottom, aluminum and tin cans, and glass jars and bottles, junk mail, office paper, newspaper, magazines, phone books, and corrugated cardboard. Make sure to rinse out cans, jars, and bottles and remove lids. Remember, do not throw any non-recyclables into the bins. UF has places to recycle batteries, ink cartridges, and Styrofoam packaging peanuts! Check out Campus Copy, Fax & Pack on the ground floor of the Union.

For on-campus recycling locations, look at the Sustainable Campus map at campusmap.ufl.edu



Polyethylene Terephthalate (PETE)

Soda, water, beer bottles; salad dressing bottles; peanut butter containers; jam jars



High-density Polyethylene (HDPE)

Milk, juice & water bottles; trash and retail bags; laundry detergent; bleach containers



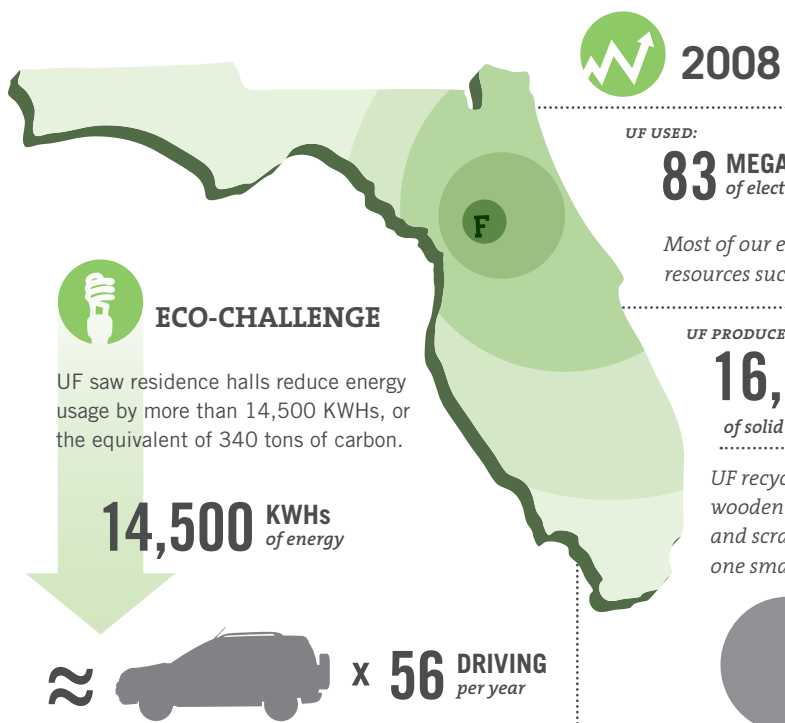
Old Corrugated Cardboard (OCC)

Corrugated: layer of "fluting" between 2 sheets of cardboard. Widely used for packaging and shipping; toy boxes



Recycled Content

Indicates recycled content. A percentage within the logo may show amount recycled.



VOTE

Seriously, it's important...

By voting, everyone can have a say in the direction the city, state, and country is headed, and elected officials can be held accountable for the decisions they make.

Register to vote in Alachua County at the Supervisor of Elections Office, or pick up a registration form at the Post Office, Public Library, or the Student Government Office on the third floor of the Reitz Union.

THE 11TH HOUR
 Directed by: Leila Petersen, Nadia Connors
 Starring: M. Gorbachev, Stephen Hawking

Environmental documentary that firmly confronts viewers about the footprint that humans have left on this planet.

Cradle to Cradle
 WILLIAM MCDONOUGH AND MICHAEL BRAUNGART
Natural Capitalism
 AMORY LOVINS, HUNTER LOVINS AND PAUL HAWKEN

PLANET EARTH
 Discovery Channel, Available on DVD
BUILDING GREEN
 PBS



SUSTAINABLE STUDIES

The Sustainability Minor is interdisciplinary, benefiting from the teaching and research of faculty from multiple departments and colleges. It is explicitly designed to complement any major area of study.

Students pursuing a Minor in Sustainability Studies must complete a total of 18 credit hours.

All students take the gateway course, "Facets of Sustainability". The course features a series of lectures by UF faculty and community leaders.

Students select 4-5 courses from a menu of other options that span multiple disciplines.

For more information, please visit:
www.clas.ufl.edu/sustainability



PLEDGE TO BE GREEN

Take the pledge to improve sustainability in your community.

www.ufgreenalumni.org